
.....

.....

.....

.....

.....

.....

.....

.....

.....

.....

.....

.....

.....

.....

.....

1

2

3

1

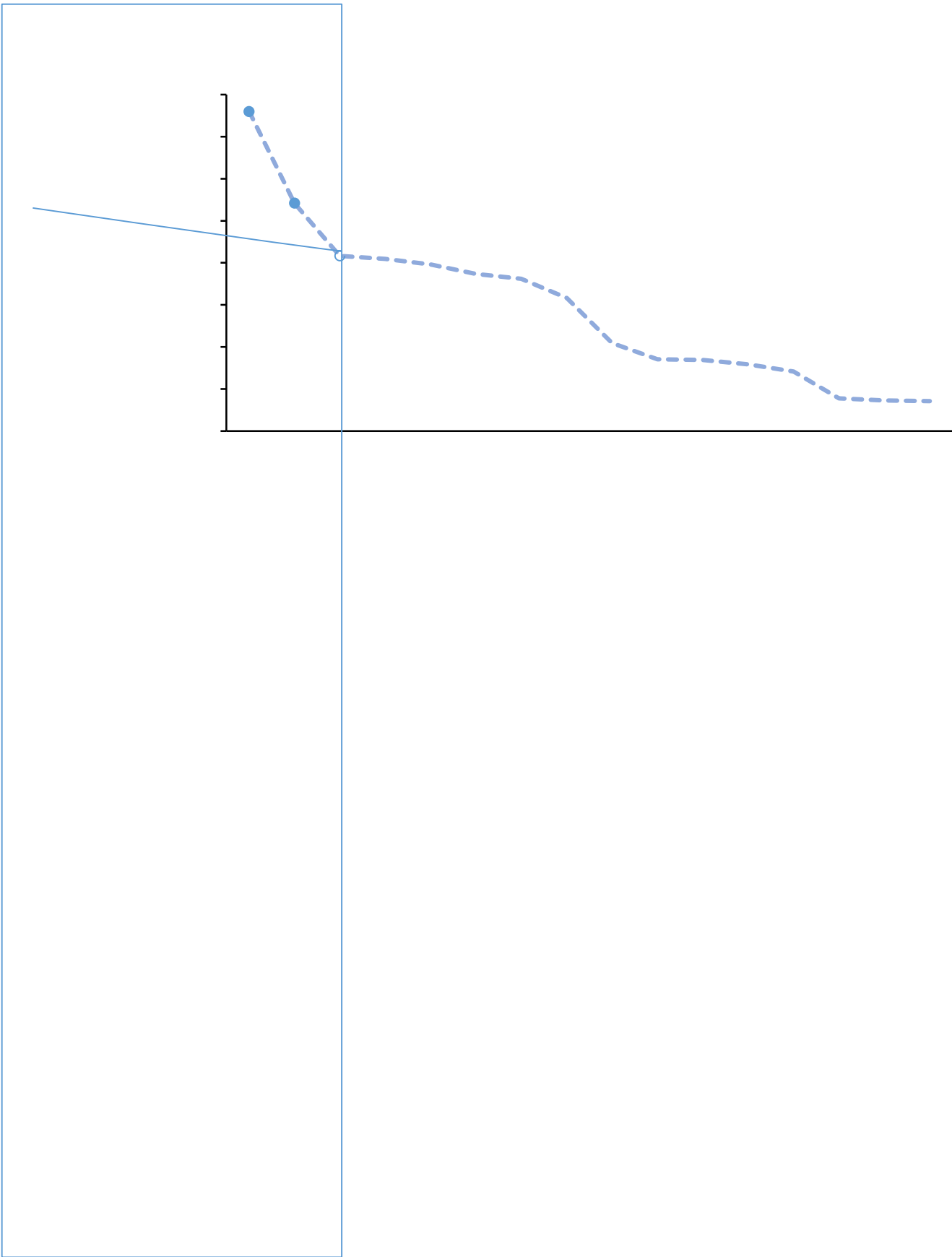
2

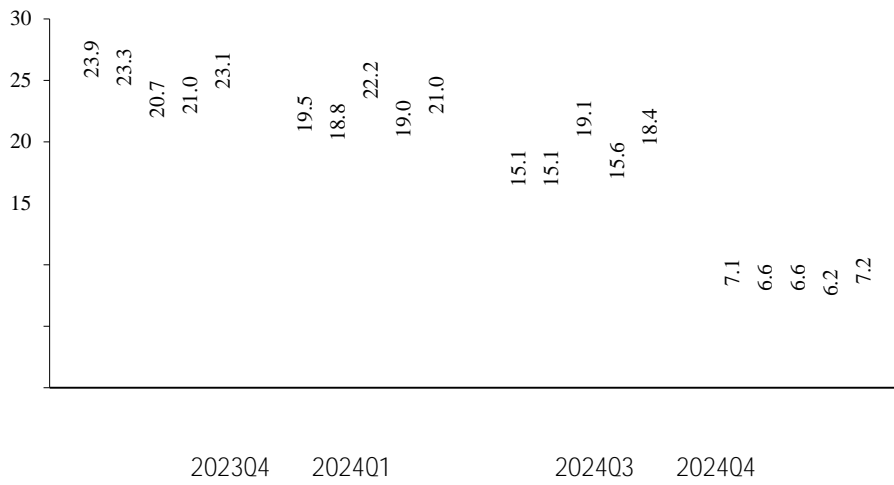
2023Q1	2023Q2	2023Q3	2023Q4	2024Q1	2024Q2	2024Q3	2024Q4
10.2	12.0	14.2	14.7	12.3	11.4	13.6	14.5
4.8	6.7	7.5	7.9	6.8	5.3	6.8	6.8
11.5	13.5	15.7	17.3	14.5	13.6	16.2	18.2
31.0	35.7	42.0	41.6	35.3	34.8	42.2	43.1

((", 1

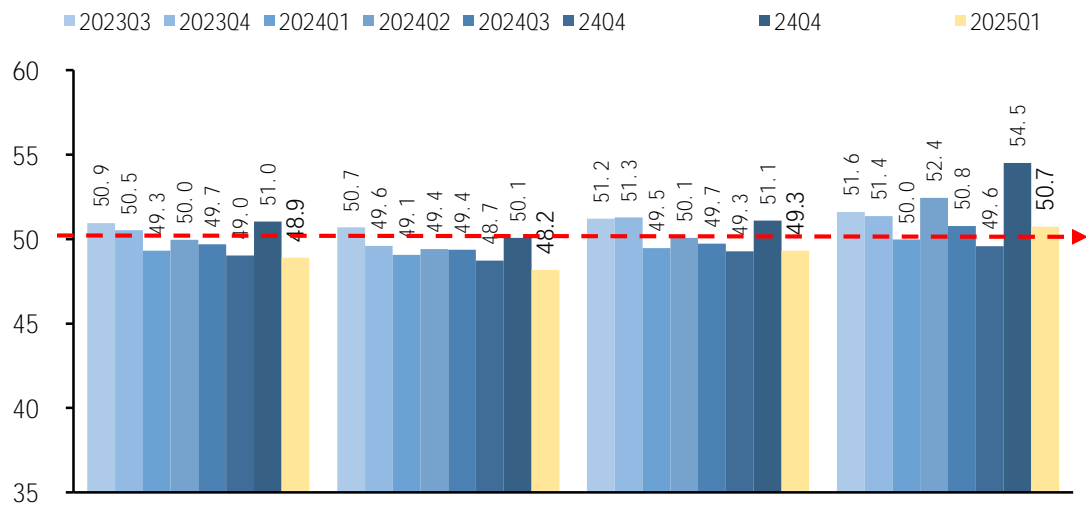
2023Q1	2023Q2	2023Q3	2023Q4	2024Q1	2024Q2	2024Q3	2024Q4
43.9	39.1	43.2	43.1	41.5	42.9	43.5	44.8
46.9	49.5	50.1	52.4	51.2	48.7	51.3	

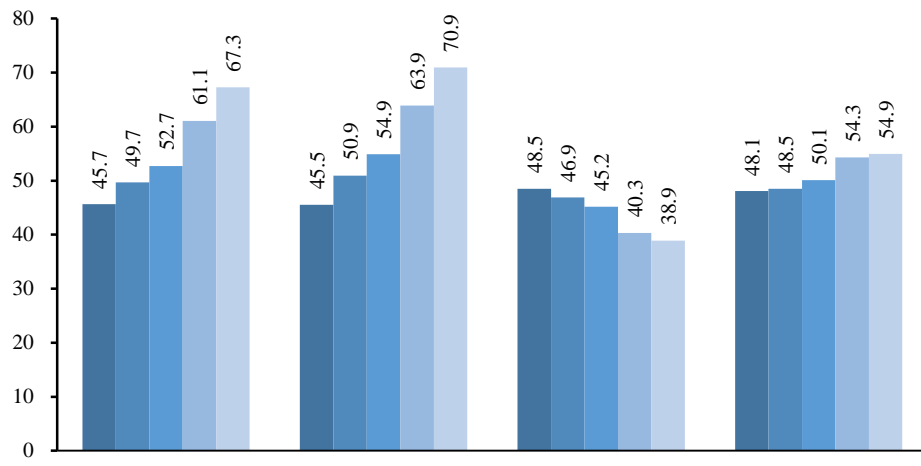
63.2	67.3	71.9
------	------	------





	2023Q1	2023Q2	2023Q3	2023Q4	2024Q1	2024Q2	2024Q3	2024Q4
	-8%	-6%	26%	3%	-3%	-1%	1%	10%
	8%	-8%	22%	2%	-4%	18%	-14%	10%
	13%	-26%	19%	5%	0%	26%	-18%	18%
	4%	-29%	24%	16%	-7%	0%	-6%	17%



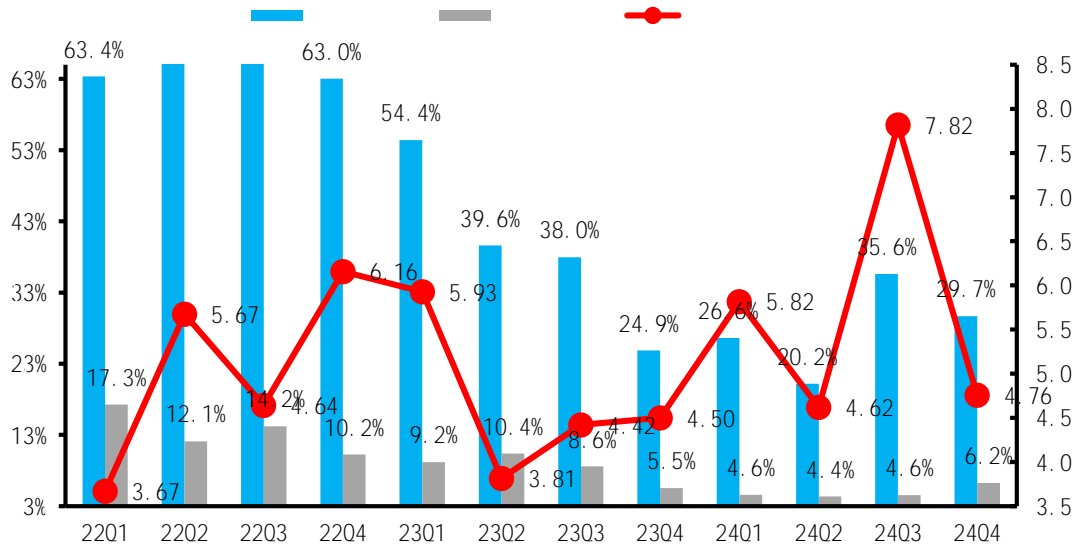


" "

" "

"

"



1.

"
"
"
"
"
"
"
"
"

2.

"
"
"
"
"
"
"
"
"
"
"
"

3.

"
"
"
"
"
"
"
"

4.

"

